

2010 ISUZU N-SERIES TRUCKS
WORKING FOR YOUR BUSINESS



2010 Isuzu N-Series. Trucks That Work For Your Business.

Isuzu Truck has achieved a major milestone by celebrating our 25th Anniversary in America. During this time, more than 400,000 Isuzu-built trucks have been sold in the U.S., with an incredible 83% still on the road today. Working hard for your business like this is a big reason why we've been America's #1 selling low cab forward truck for 23 straight years.



Our 2010 N-Series line-up continues this tradition by offering trucks with exceptional productivity, plus turn-on-a-dime maneuverability and a low cost of ownership.

The Isuzu Hexapod cab features 3-across front seating with plenty of room for heads, legs and shoulders. Further driver convenience is found in the dashboard's full complement of easy-to-see gauges and warning lamps.

Storage areas are abundant in the N-Series, including in the seat backs, dashboard, glove box, overhead storage shelves and rear storage organizer. There are also large map pockets built into the fully trimmed door panels, plus cup holders in the center console and in the dashboard.

To extend durability, the cab has rust and corrosion protection from the galvanized steel panels to the electro-deposit paint primer and enamel paint topcoat. Unitary construction, rigidity and strong reinforcements also add to cab durability, as well as safety of the driver and passengers.



business.



2010 Isuzu N-Series



N-Series Crew Cab. Works For Your Whole Crew.



Boost your productivity with an N-Series Crew Cab. You can haul up to seven workers and all their gear in one trip with a 2010 N-Series Crew Cab. Trucks featuring this Crew Cab design can handle 12-16' bodies, making them perfect for landscape,



construction or delivery applications. Adding further to their versatility, these N-Series Crew Cab trucks come with a

choice of diesel (2010 MY) or gas-powered engines (2009 MY). The 205-hp diesel engine provides 441 lb/ft of torque and is combined with a 6-speed automatic transmission with double overdrive and PTO function. The 325-hp gas engine on 2009 gas models is mated to a 4-speed automatic with overdrive and lock-up torque converter.

You'll be amazed at the maneuverability, ease of handling and payload capacity of our N-Series trucks, partnered with the Crew Cab design.

Amenities adding to the comfort and productivity of the Isuzu Crew Cab design include a fold-down workstation, handy cup holders and optional rear-seat heaters. Additionally, a panoramic windshield provides great visibility in traffic and on the job site.

Combine all these benefits with our legendary dependability, and you won't find a more productive solution for your business.



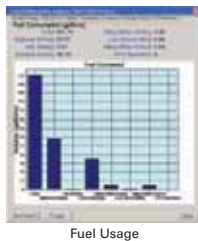
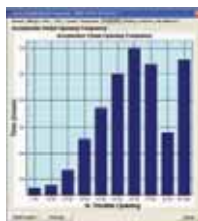
2010 Isuzu N-Series. The Trucks That Work For You A

You see Isuzu trucks everywhere, working on a wide array of jobs. Capable of accommodating bodies ranging from 10-24 ft. in length, Isuzu N-Series models offer versatility you just can't get with conventional trucks, cutaways and pickups.

All 2010 N-Series diesel trucks are powered by our 205 hp, overhead cam, 5.2L turbocharged 4H diesel engine with more power than any other truck in its class. It has a B-10 durability rating of 310,000 miles, which means 90% of 4H engines should reach that mileage before requiring an overhaul.

To help improve vehicle performance further and greatly reduce your cost of operation, your dealer can utilize the exclusive IDSS diagnostic tool on all new Isuzu diesel trucks to generate a Vehicle Health Report.

Component performance and driver usage data provided by this valuable report include: condition of engine, transmission, emissions and brakes, plus fuel economy and driver operating habits.



It's easy to see why Isuzu has earned a reputation for legendary reliability. Of the 400,000 Isuzu-built trucks ever sold since 1984 in the U.S., an impressive 83% are still registered today. Now that's durability!

Anywhere.



2010 Isuzu N-Series Trucks.



Driver- and passenger-friendly cab with fold-down workstation

Extra storage behind seat for triangle kit

Spacious 3-across seating with ample headroom

Plenty of handy in-door and overhead storage



All The Features You Need To Do A Better Job.



With 2010 Isuzu trucks, a lot of standard features add up to a lot more convenience, durability and flexibility.

Wheelbase choices from 109" to 212" easily handle bodies from 10' to 24' in length. NQR and NRR trucks deliver the capabilities of larger vehicles in a more maneuverable and competitively priced package. These models are ideally suited for furniture and appliance companies, florists and HVAC contractors.

For longer brake life, an Electronic Braking Distribution system balances brake pressure to all wheels by automatically adjusting to the load's weight distribution.

Legendary Isuzu engines are matched with the finest transmissions to deliver smooth, efficient operation. The 4H diesel engine is mated to a manual transmission or an Aisin heavy-duty, 6-speed automatic transmission with lockup torque converter, double overdrive and PTO capability. Vortec gas engines are coupled with Hydra-Matic 4-speed automatics with lockup torque converter and overdrive (2009 MY).

In the area of maintenance, the tilt-cab provides full access to the engine and transmission, thereby promoting fast and easy servicing. Plus key fluid checks are located in the cab for easy access by the driver.

Extra features like these can make a big difference in driving up efficiency while they drive down your cost of ownership.

Easy-to-read instrumentation including tachometer



Optional seat covers are part of a wide variety of accessories.



2010 N-Series Truck Specifications

ISUZU MODEL	NPR DIESEL*	NPR-HD DIESEL	NPR-HD DIESEL CREW CAB	NQR DIESEL	NQR DIESEL CREW CAB	NRR	2009 NPR GAS*	2009 NPR-HD GAS*
GVWR/GCWR	12,000/18,000 lbs.	14,500/20,500 lbs.	14,500/20,500 lbs.	17,950/23,950 lbs.	17,950/23,950 lbs.	19,500/25,500 lbs.	12,000/18,000 lbs.	14,500/20,500 lbs.
BODY/PAYLOAD ALLOWANCE**	6,140-6,328 lbs.	8,557-8,915 lbs.	7,979-8,105 lbs.	11,506-11,872 lbs.	11,017-11,131 lbs.	12,934-13,357 lbs.	6,829-6,997 lbs.	9,279-9,411 lbs.
GAWR								
Front	5,360 lbs.	5,360 lbs.	5,360 lbs.	6,830 lbs.	6,830 lbs.	6,830 lbs.	4,700 lbs.	5,360 lbs.
Rear	8,840 lbs.	9,880 lbs.	9,880 lbs.	12,980 lbs.	12,980 lbs.	13,660 lbs.	7,950 lbs.	9,880 lbs.
FRONT AXLE CAPACITY	6,830 lbs.	6,830 lbs.	6,830 lbs.	6,830 lbs.	6,830 lbs.	6,830 lbs.	6,830 lbs.	6,830 lbs.
REAR AXLE								
Capacity	14,550 lbs.	14,550 lbs.	14,550 lbs.	14,550 lbs.	14,550 lbs.	14,550 lbs.	11,020 lbs.	11,020 lbs.
Ratio (AT/MT)	4.555	4.777 AT/4.300 MT	4.777	5.571 AT/4.555 MT	5.571	5.857 AT/4.555 MT	4.777	5.125
SUSPENSION-F/R SPRINGS***	Tapered/Multi-Leaf	Tapered/Multi-Leaf	Tapered/Multi-Leaf	Tapered/Multi-Leaf	Tapered/Multi-Leaf	Tapered/Multi-Leaf	Tapered/Multi-Leaf	Tapered/Multi-Leaf
Capacity F/R	8,440/9,880 lbs.	8,440/9,880 lbs.	8,440/9,880 lbs.	8,440/14,550 lbs.	8,440/14,550 lbs.	8,440/14,550 lbs.	8,440/9,880 lbs.	8,440/9,880 lbs.
FRAME								
Section Modulus	7.20 in ⁴	7.20 in ⁴	11.89 in ⁴	7.20 in ⁴	11.89 in ⁴	7.20 in ⁴	7.20 in ⁴	7.20 in ⁴
Resistance Bending Moment	316,800 lb-ft/in	316,800 lb-ft/in	523,160 lb-ft/in	316,800 lb-ft/in	523,160 lb-ft/in	316,800 lb-ft/in	316,800 lb-ft/in	316,800 lb-ft/in
SERVICE BRAKES	Vacuum/Hydraulic w/4-Channel ABS	Vacuum/Hydraulic w/4-Channel ABS	Vacuum/Hydraulic w/4-Channel ABS	Hydraulic Boosted w/4-Channel ABS Hydraulic	Hydraulic Boosted w/4-Channel ABS Hydraulic	Hydraulic Boosted w/4-Channel ABS Hydraulic	Vacuum/Hydraulic w/4-Channel ABS	Vacuum/Hydraulic w/4-Channel ABS
Front/Rear	Disc/Drum	Disc/Drum	Disc/Drum	Disc/Drum	Disc/Drum	Disc/Drum	Disc/Drum	Disc/Drum
EXHAUST BRAKE	Standard	Standard	Standard	Standard	Standard	Standard	N/A	N/A
TRANSMISSION								
Standard	6-Speed Automatic Aisin Double Overdrive Lock-up, 2nd-6th	6-Speed Automatic Aisin Double Overdrive Lock-up, 2nd-6th	6-Speed Automatic Aisin Double Overdrive Lock-up, 2nd-6th	6-Speed Automatic Aisin Double Overdrive Lock-up, 2nd-6th	6-Speed Automatic Aisin Double Overdrive Lock-up, 2nd-6th	6-Speed Automatic Aisin Double Overdrive Lock-up, 2nd-6th	4L80-E Hydra-Matic 4 Speed Auto w/Lock-up Torque Converter & OD	4L80-E Hydra-Matic 4 Speed Auto w/Lock-up Torque Converter & OD
Optional	N/A	MZZ 6-Speed Manual	N/A	MZZ 6-Speed Manual	N/A	MZZ 6-Speed Manual	N/A	N/A
ENGINE	Turbo/Intercooled Diesel 4H	Turbo/Intercooled Diesel 4H	Turbo/Intercooled Diesel 4H	Turbo/Intercooled Diesel 4H	Turbo/Intercooled Diesel 4H	Turbo/Intercooled Diesel 4H	GMPT Vortec 6000 V8 SFI	GMPT Vortec 6000 V8 SFI
Displacement	5.2L (317 CID)	5.2L (317 CID)	5.2L (317 CID)	5.2L (317 CID)	5.2L (317 CID)	5.2L (317 CID)	6.0L (365 CID)	6.0L (365 CID)
Horsepower (Gross)	205 HP @ 2,400 RPM	205 @ 2,400 RPM (AT) 175 @ 2,400 RPM (MT)	205 HP @ 2,400 RPM	205 @ 2,400 RPM (AT) 175 @ 2,400 RPM (MT)	205 HP @ 2,400 RPM	205 @ 2,400 RPM (AT) 175 @ 2,400 RPM (MT)	325 HP @ 5,000 RPM	325 HP @ 5,000 RPM
Torque (Gross)	441 lb/ft @ 1,850 RPM	441 lb/ft @ 1,850 (AT) 387 lb/ft @ 1,850 (MT)	441 lb/ft @ 1,850 RPM	441 lb/ft @ 1,850 (AT) 387 lb/ft @ 1,850 (MT)	441 lb/ft @ 1,850 RPM	441 lb/ft @ 1,850 (AT) 387 lb/ft @ 1,850 (MT)	360 lb/ft @ 4,400 RPM	360 lb/ft @ 4,400 RPM
Oil Level Indicator	Dash-mounted oil level check switch and light	Dash-mounted oil level check switch and light	Dash-mounted oil level check switch and light	Dash-mounted oil level check switch and light	Dash-mounted oil level check switch and light	Dash-mounted oil level check switch and light	N/A	N/A
LIMITED SLIP DIFFERENTIAL	Optional	Optional	Optional	Optional	Optional	Optional	Optional	Optional
ALTERNATOR	110A	110A	110A	110A	110A	110A	145A w/Integral Regulator	145A w/Integral Regulator
BATTERIES (CCA)	2 Batteries @ 750 CCA Maintenance Free	2 Batteries @ 750 CCA Maintenance Free	2 Batteries @ 750 CCA Maintenance Free	2 Batteries @ 750 CCA Maintenance Free	2 Batteries @ 750 CCA Maintenance Free	2 Batteries @ 750 CCA Maintenance Free	1 Battery @ 750 CCA Maintenance Free	1 Battery @ 750 CCA Maintenance Free
TIRES	215/85R-16E (10 Ply)	215/85R-16E (10 Ply)	215/85R-16E (10 Ply)	225/70R-19.5F (12 Ply)	225/70R-19.5F (12 Ply)	225/70R-19.5F (12 Ply)	215/85R-16E (10 Ply)	225/70R-19.5F (12 Ply)
STEERING	Integral Hydraulic Power	Integral Hydraulic Power	Integral Hydraulic Power	Integral Hydraulic Power	Integral Hydraulic Power	Integral Hydraulic Power	Integral Hydraulic Power	Integral Hydraulic Power
STEERING COLUMN	Tilt & Telescopic	Tilt & Telescopic	Tilt & Telescopic	Tilt & Telescopic	Tilt & Telescopic	Tilt & Telescopic	Tilt & Telescopic	Tilt & Telescopic
FUEL TANK								
Standard	30 gal. In-Frame	30 gal. In-Frame	30 gal. In-Frame	30 gal. In-Frame	30 gal. In-Frame	30 gal. In-Frame	30 gal. In-Frame	30 gal. In-Frame
Optional	33 gal. Right Frame	33 gal. Right Frame	33 gal. Right Frame Mount	33 gal. Right Frame Mount	33 gal. Right Frame Mount	33 gal. Right Frame Mount	N/A	N/A
Dual**** (Optional)	30 gal. In-Frame + 33 gal. Left Frame	30 gal. In-Frame + 33 gal. Left Frame	30 gal. In-Frame + 33 gal. Left Frame	30 gal. In-Frame + 33 gal. Left Frame	30 gal. In-Frame + 33 gal. Left Frame	30 gal. In-Frame + 33 gal. Left Frame	N/A	N/A
FUEL/WATER SEPARATOR	Fuel/water separator with dash-mounted indicator light.	Fuel/water separator with dash-mounted indicator light.	Fuel/water separator with dash-mounted indicator light.	Fuel/water separator with dash-mounted indicator light.	Fuel/water separator with dash-mounted indicator light.	Fuel/water separator with dash-mounted indicator light.	N/A	N/A



Gas or Diesel?

Isuzu trucks give you a choice. The Vortec V8 Gas engine is the ideal solution for 30,000 miles/year or less. For more annual mileage, the 205-hp Isuzu 4H diesel is the most powerful engine in its class. Two more examples of how Isuzu Trucks work for your business.



2010 N-SERIES DIESEL TRUCKS ARE AVAILABLE IN SIX COLORS AND A VARIETY OF WHEELBASES TO FIT YOUR APPLICATION.

2009 NPR GAS CREW CAB*	2009 NPR HD GAS CREW CAB*
12,000/18,000 lbs.	14,500/20,500 lbs.
6,189-6,244 lbs.	8,639-8,685 lbs.
4,700 lbs. 7,950 lbs.	5,360 lbs. 9,880 lbs.
6,830 lbs.	6,830 lbs.
11,020 lbs. 4,777	11,020 lbs. 5,125
Tapered/Multi-Leaf	Tapered/Multi-Leaf
8,440/9,880 lbs.	8,440/9,880 lbs.
7.20 in'	7.20 in'
316,800 lb-ft/in	316,800 lb-ft/in
Vacuum/Hydraulic w/4-Channel ABS	Vacuum/Hydraulic w/4-Channel ABS
Disc/Drum	Disc/Drum
N/A	N/A
4L80-E Hydra-Matic 4 Speed Auto w/Lock-up Torque Converter & OD	4L80-E Hydra-Matic 4 Speed Auto w/Lock-up Torque Converter & OD
N/A	N/A
GMPT Vortec 6000 V8 SFI	GMPT Vortec 6000 V8 SFI
6.0L (365 CID)	6.0L (365 CID)
325 HP @ 5,000 RPM	325 HP @ 5,000 RPM
360 lb/ft@ 4,400 RPM	360 lb/ft@ 4,400 RPM
N/A	N/A
Optional	Optional
145A	145A
1 Battery @ 750 CCA Maintenance Free	1 Battery @ 750 CCA Maintenance Free
215/85R-16E (10 Ply)	225/70R-19.5F (12 Ply)
Integral Hydraulic Power	Integral Hydraulic Power
Tilt & Telescopic	Tilt & Telescopic
30 gal. In-Frame	30 gal. In-Frame
N/A	N/A
N/A	N/A
N/A	N/A



← 109 inch →



← 132.5 inch →



← 150 inch →



← 176 inch →



← 200 inch →



← 212 inch →



Arc White



Cardinal Red



Wheatland Yellow



Dark Blue



Woodland Green*



Ebony Black II

Note: * 2009 model year.

** Body/Payload Allowance is combined weight of body, payload, equipment and occupants.

*** With front stabilizer bar and front & rear shock absorbers.

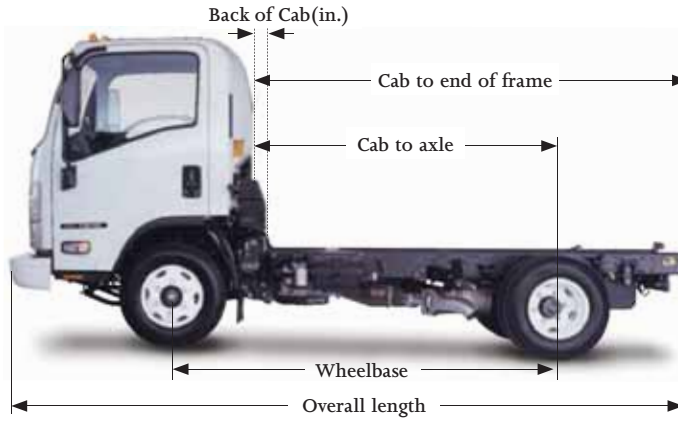
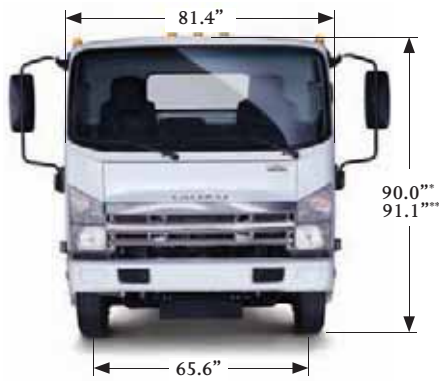
**** Dual fuel tank N/A on Diesel 109" WB.



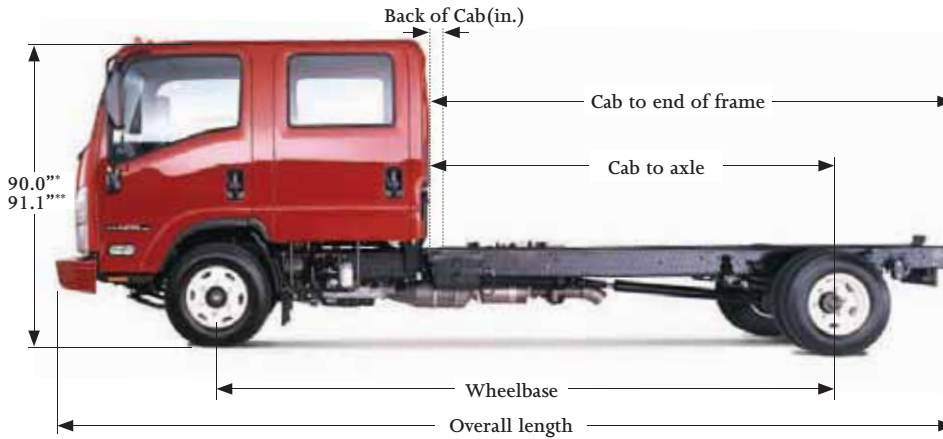
50-STATE CLEAN IDLE CERTIFIED

* Shown with optional chrome grill and with equipment from an independent supplier.

NPR DIESEL, NPR GAS, NQR AND NRR DIMENSIONS



NPR-HD CREW CAB AND NQR CREW CAB DIMENSIONS



NPR/NPR-HD - DIESEL/GAS					
Wheel-base (in.)	Cab to †† Axle (in.)	Cab to †† End of Frame (in.)	Overall Length (in.)	Body Length (ft.)	Back of Cab (in.)
109.0	86.5	129.6	200.5	10-12	6.5
132.5	110.0	153.1	224.0	14	6.5
150.0	127.5	170.6	241.5	16-18	6.5
176.0	153.5	196.6	267.5	20	6.5

NPR-HD CREW CAB & NQR CREW CAB					
Wheel-base (in.)	Cab to †† Axle (in.)	Cab to †† End of Frame (in.)	Overall Length (in.)	Body Length (ft.)	Back of Cab (in.)
150	88.5	131.6	241.5	12	5.0
176	114.5	157.6	267.5	16	5.0

NQR/NRR DIESEL					
Wheel-base (in.)	Cab to †† Axle (in.)	Cab to †† End of Frame (in.)	Overall Length (in.)	Body Length (ft.)	Back of Cab (in.)
109.0	86.5	129.6	200.5	10	6.5
132.5	110.0	153.1	224.0	12-14	6.5
150.0	127.5	170.6	241.5	16	6.5
176.0	153.5	196.6	267.5	18-20	6.5
200.0	177.5	220.6	291.5	22	6.5
212.0†	189.5	232.6	303.5	24	6.5

† NRR only; †† Effective Cab to Axle & Cab to End of frame are CA or CE less Back of Cab.

* 90.0" = NPR std. cab, NPR gas std. cab, NPR gas crew cab. NPR-HD diesel std. cab, NPR-HD diesel crew cab.
 ** 91.1" = NQR, NQR diesel crew cab, NPR-HD gas std. cab, NPR-HD gas crew cab, NRR

2010 N-SERIES DIESEL WARRANTY

Vehicle Coverage	Warranty Limitations		Percentage Of Dealer's Normal Charge Paid By Owner	
	Time in months*	Vehicle miles*	Parts	Labor
Basic (See "What's covered")	0-36	Unlimited	NC	NC
Engine	0-36	Unlimited	NC	NC
• Transmission • Drive Axles • Front Axle I-Beam • Crossmembers • Flywheel Housing • Clutch Housing	0-36	Unlimited	NC	NC
Frame Rails	0-36 36-60	Unlimited Unlimited	NC 50%	NC 50%
Federal Emissions	0-60	0-100,000	NC	NC
California Emissions (NPR)**	0-36	0-50,000	NC	NC
California Emissions (NQR)**	0-84	0-70,000	NC	NC
Corrosion (Rust Through)	0-48	Unlimited	NC	NC
Batteries	0-12	Unlimited	NC	NC

* The warranty coverages are determined by the mileage of the vehicle and the number of months from the delivery date. The warranty coverages are limited by whichever occurs first.

** See your Authorized Isuzu dealer or warranty booklet for full details.

All photographs, illustrations, equipment and technical data shown in this brochure are based on the latest information available at the time of publication. Isuzu Commercial Truck of America, Inc. reserves the right to make changes at any time, without notice, in prices, colors, materials, equipment, specifications and models, and to discontinue models or equipment. Some vehicles are shown with optional equipment. Some equipment is dealer installed. Isuzu gas models are assembled by an independent manufacturer to meet Isuzu's exacting standards for quality, performance and safety. See your authorized Isuzu Truck dealer for warranty and other details. NPR, NPR-HD, NQR, and NRR are trademarks of Isuzu Motors Limited.

2009 N-SERIES GAS WARRANTY

Vehicle Coverage	Warranty Limitations		Percentage Of Dealer's Normal Charge Paid By Owner	
	Time in months*	Vehicle miles*	Parts	Labor
Basic (See "What's covered")	0-36	0-36,000	NC	NC
Engine	0-60	0-75,000	NC	NC
• Transmission • Drive Axles • Propeller Shaft • Front Axle I-Beam • Crossmembers	0-60	0-75,000	NC	NC
Frame Rails	0-36 36-60	0-36,000 Unlimited	NC 50%	NC 50%
Federal Emissions	0-60	0-50,000	NC	NC
Engine Emission Control System (NPR model) California**	0-36	0-50,000	NC	NC
Engine Emission Control System (NQR model) California**	0-84	0-70,000	NC	NC
Corrosion (Rust Through)	0-48	Unlimited	NC	NC
Batteries	0-12	Unlimited	NC	NC

* The warranty coverages are determined by the mileage of the vehicle and the number of months from the delivery date. The warranty coverages are limited by whichever occurs first.

** See your Authorized Isuzu dealer or warranty booklet for full details.



SEE. THE DIFFERENCE.

Isuzu's 2010 truck line-up comes with a unique difference you can see. In fact, we call it SEE technology. It stands for Safety, Economy and Environment. Because it drives the core of the engineering efforts, SEE enables us to bring you technically advanced and highly reliable products that perform equally well in your fleet and in our environment.

Safety. Isuzu trucks help protect drivers with stronger and quieter Hexapod cabs, which also offer reduced VOCs in the cabin. Panoramic windshields and side windows afford unsurpassed visibility. Plus Isuzu trucks' legendary maneuverability helps drivers avoid problems in traffic and on job sites.

Economy. Isuzu trucks are helping reduce the world's dependence on oil through advanced powertrain development. All Isuzu diesel engines feature common rail fuel injection, variable-geometry turbo chargers and advanced combustion designs for maximum fuel efficiency.

Environment. In the 25 years that Isuzu has been selling trucks in the United States, Isuzu diesel engine particulate matter emissions (soot) have been reduced by over 98%. Isuzu trucks minimize their environmental footprint by reducing CO₂ emissions through improved fuel consumption, and by meeting the world's most stringent Oxide of Nitrogen (NO_x) and Particulate Matter emissions requirements. Isuzu's clean diesel technology makes our trucks as good for the environment as they are for your business. In addition, Isuzu products are being developed in a more sustainable manner, including reduced energy usage and CO₂ emissions during production, and through utilization of Design For the Environment (DFE) principles in product development to facilitate recycling when our trucks finally do wear out.

For more information on how Isuzu SEE technology can make the difference in your fleet today and well into the future, contact your Isuzu truck dealer or visit isuzuev.com.





SEE, NPR, NPR HD, NQR, and NRR are trademarks of Isuzu Commercial Truck of America, Inc.

© 2009 ISUZU COMMERCIAL TRUCK OF AMERICA, INC. TM10132 (6/09)