



# ESSEX

2025 LUXURY MOTORCOACH



## A coach with a certain something.

There's a certain refinement you get inside the 2025 Essex that you won't find in other coaches. A kind of classic luxury. It's the embodiment of a lifestyle. Thanks to impressive technology, elevated décor, and a style all its own, the Essex is a coach meant for those who know exactly what they're looking for in travel.



# Freightliner® SL Tag Axle Chassis Spartan® K3 Tag Axle Chassis (Optional)

Cummins X15 Diesel Engine | 605 HP | 1,950 lb./ft. torque | Sand Dollar Full-Paint Masterpiece Finish™ Exterior



45' / 4 floor plans



## CONTEMPORARY

INTERIOR & EXTERIOR

# COCKPIT

**Leather-Trimmed Steering Wheel**

**Industry-First Comfort Drive™ Adaptive Steering**

**Mobileye® Lane Tracking and Departure System**

**OnGuard™ Collision Mitigation Adaptive Cruise System**

Adjustable Following Distance Control

**Valid Digital Glare-Free Dash**

**Leather\* Heated and Cooled Driver and Passenger Seats**

Power Lumbar, Recline, and Footrest

Driver and Passenger Seat Massage Feature (Optional)

**Xite Dash Radio**

20" Infotainment Screen\*

Nav-N-Go Navigation System

Apple CarPlay®

360 Camera System

Tri-View Rear Camera

Predictive Grid Lines

**Passenger Side Monitor** (Optional)

**Wireless Charging Mats**

**Push Button Start**

**Harman/JBL 360w Sound System**

\*New for 2025





Floor plan 4551 with Sanremo décor and Sable high gloss contemporary cabinets

## CABIN

**Four Décor Options: Broderick, Hayden\*,  
Sanremo, and Veranda\***

Contemporary Décor Package\*<sup>2</sup> (Optional)

**Real Leather\* 87" Powered Theater Seating  
and 68" Trifold Sofa\*\***

**50" Samsung® 4K LED TV<sup>1</sup>**

Bose® 900 Soundbar

Bose® 500 Subwoofer

**Bay-Like Bonded Windows**

<sup>\*</sup>New for 2025

<sup>\*\*</sup>See Features & Options for all available furniture configurations

<sup>1</sup>TV Sizes vary by floor plan

<sup>2</sup>Contemporary decor package available exclusively in Sanremo décor



# CABIN

**43" Samsung® 4K LED TV in Front Overhead**

**Maple Hardwood Cabinets in High Gloss or Suede\* Finish**

Available in Four Colors and Three Two-Tone Options\*

Soft-Close Cabinet Doors

Undermounted LED Lights

**Three 15K BTU Penguin™ Heat Pump Central Air Conditioners**

**Starlink Internet System\*1** (Optional)

**Tile Flooring**

**Electric Radiant Heat Beneath Main Floor Tile**

**SilverLeaf® Monitor**



Floor plan 4551 with Sanremo décor and Sable high gloss contemporary cabinets

## CONTEMPORARY CABINET FINISHES



SUMMIT



MOREL



SEDONA



SABLE

\*New for 2025  
 \*Additional WiFi solutions available



## GALLEY & DINETTE

**21.6 Cu. Ft. Bosch® Refrigerator**

**Bosch® Microwave**

**All-Electric Bosch® Recessed Mount Induction Cooktop**

**Wood Panel Dishwasher in Drawer** (Optional)

**Silhouette Dual-Zone Wine Cooler\*** (Optional)

**Large Pantry**

Pull-Out Shelves

Dedicated Serving Tray/Bakeware Storage

Electric Travel Door Lock System

Undermounted LED Lights

**Super-Polished Solid-Surface Countertops**

**Kitchen Window** (Optional)

**Euro Booth Dinette\*\***

Two Table Leaves

Two Folding Chairs

*\*New for 2025, available exclusively on Floor Plan 4595*

*\*\*Additional dinette configurations available; see Features & Options for details*









## BEDROOM

### **King-Size Adjustable-Support Air Bed**

**Samsung® 4K LED TV**

Bose® Bedroom Speaker

### **Lighted Wardrobe**

Cedar Paneling

Pull-Out Shoe Storage

Safe



# BATHROOM

## Midship Bath

Lighted Vanity Mirrors

Fully Tiled Shower Walls and Floor\*

Aqua Miser® Shower System

Chinook Dual Loop Heat with Continuous Water

Stacked Two-Piece Splendide® Washer and Dryer\*\*

Super-Polished Solid-Surface Countertop

Cathedral Ceiling for Added Height



\*Shower sizes vary by floor plan  
\*\*New for 2025



## EXTERIOR & STORAGE

### Industry-Exclusive Full-Paint Masterpiece Finish™ with Cut and Buff

New Traditional Exterior Design with Four Color Combinations\*  
New Contemporary Exterior Design with Four Color Combinations\*

### SilverStar Ultra Headlight Bulbs

### Push-Button Exterior Baggage Doors

Power Soft-Closing System

### Girard® Nova Side Awnings

Wind Sensor  
Remote Control  
LED Lights

### 3.0 Cu. Ft. Dometic® Freezer on Pull-Out Tray

### Exterior Entertainment Center (Optional)

43" Samsung® 4K LED TV  
Bose® Soundbar

\*New for 2025



## EXTERIOR

### Lithium-Ion Battery System

Surge Guard Transfer Switch

### Industry-Exclusive STAR Foundation

### Security Lights

### 12.5 kW Cummins Onan® Diesel Generator

### Tank Dump Side Tilt Mode

### 10w Solar Panel

(to charge chassis battery)

### Four Flexible 110w Solar Panels on Roof (Optional)





# TRADITIONAL

INTERIOR & EXTERIOR





Floor plan 4569 with Veranda décor and Summit upper and Sedona lower high gloss traditional cabinets

TRADITIONAL  
CABINET FINISHES





Floor plan 4569 with Veranda décor and Summit upper and Sedona lower high gloss traditional cabinets















# DESIGN OPTIONS

---

INTERIOR AND EXTERIOR

CONTEMPORARY EXTERIOR

# LIGHT ROSEWOOD



| Hogan Sparrow Awning



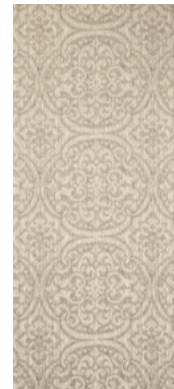
**BRODERICK INTERIOR**



Furniture



Fabric



Fabric



Flooring



Counter Top

*\*Exterior colors and interior décor options can be matched to customer preference.*

CONTEMPORARY EXTERIOR

# SAND DOLLAR



| Hogan Sparrow Awning



**HAYDEN INTERIOR**



Furniture



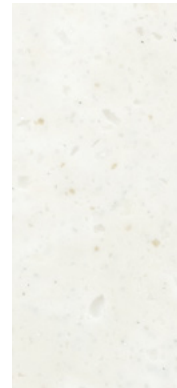
Fabric



Fabric



Flooring



Counter Top

CONTEMPORARY EXTERIOR

# TIDEPOOL BLUE



| Charcoal Tweed Awning



**SANREMO INTERIOR**



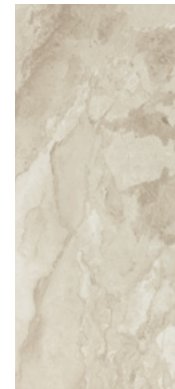
Furniture



Fabric



Fabric



Flooring



Counter Top

*\*Exterior colors and interior décor options can be matched to customer preference.*

CONTEMPORARY EXTERIOR

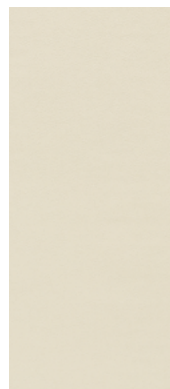
# TRICORN BLACK



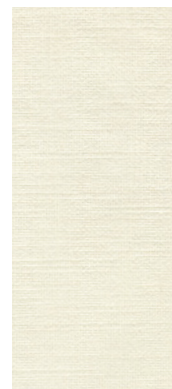
| Charcoal Tweed Awning



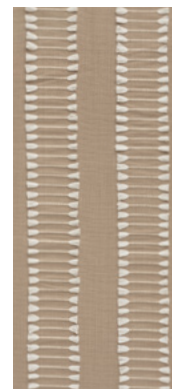
**VERANDA INTERIOR**



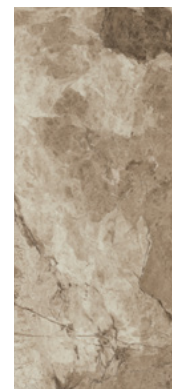
Furniture



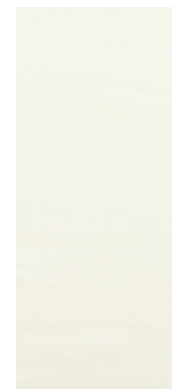
Fabric



Fabric



Flooring



Counter Top



TRADITIONAL EXTERIOR

# DESERT SAND



Hogan Sparrow Awning

TRADITIONAL EXTERIOR

# IRON ORE



Charcoal Tweed Awning

TRADITIONAL EXTERIOR

# METEOR SHOWER



Charcoal Tweed Awning

TRADITIONAL EXTERIOR

# NORDIC SEA



Charcoal Tweed Awning

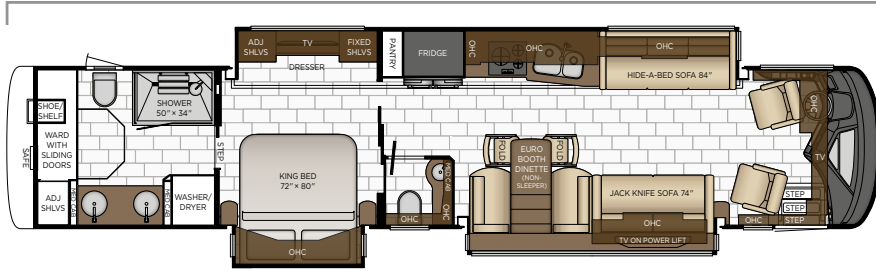


# FLOOR PLANS

---

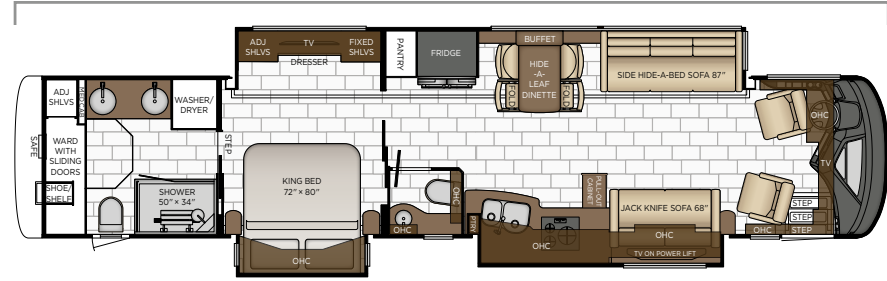
AND SPECIFICATIONS

Length: 44' 10"



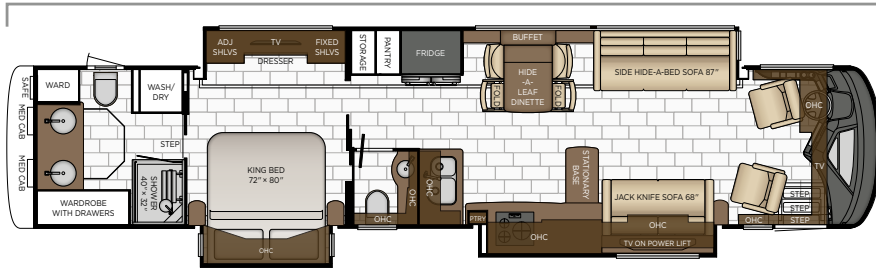
<b>4521</b>	Length	44' 10"	Grey Tank	80 gal.
	Width	101.5"	Sewage Tank	60 gal.
	App. Overall Height	13' 04"	Water Tank	105 gal.
	Interior Width	95.5"	Furnace	50,000 btu
	Interior Height	83"		

Length: 44' 10"



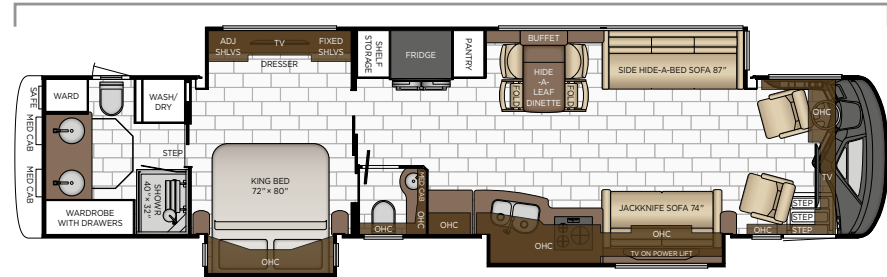
<b>4551</b>	Length	44' 10"	Grey Tank	80 gal.
	Width	101.5"	Sewage Tank	60 gal.
	App. Overall Height	13' 04"	Water Tank	105 gal.
	Interior Width	95.5"	Furnace	50,000 btu
	Interior Height	83"		

Length: 44' 10"



<b>4569</b>	Length	44' 10"	Grey Tank	80 gal.
	Width	101.5"	Sewage Tank	60 gal.
	App. Overall Height	13' 04"	Water Tank	105 gal.
	Interior Width	95.5"	Furnace	50,000 btu
	Interior Height	83"		

Length: 44' 10"



<b>4595</b>	Length	44' 10"	Grey Tank	80 gal.
	Width	101.5"	Sewage Tank	60 gal.
	App. Overall Height	13' 04"	Water Tank	105 gal.
	Interior Width	95.5"	Furnace	50,000 btu
	Interior Height	83"		



Floor plan 4551 with Sanremo décor and Sable high gloss contemporary cabinets

# Quality You Can Feel

Like a fine home, the 2025 Essex is framed 16 inches on center, and is covered by a fiberglass roof with an integrated gutter rail.

FREIGHTLINER®											
FLOOR PLAN	ENGINE HP	AXLE RATIO	FUEL CAP.	WHEEL BASE	FRONT GAWR	REAR GAWR	TAG GAWR	GVWR	GCWR	APP. UVW	APP. NCC
4521	605	4.3	150	292+TAG	20000 lb.	20000 lb.	14000 lb.	54000 lb.	74000 lb.	46700 lb.	7300 lb.
4551	605	4.3	150	292+TAG	20000 lb.	20000 lb.	14000 lb.	54000 lb.	74000 lb.	47100 lb.	6900 lb.
4569	605	4.3	150	292+TAG	20000 lb.	20000 lb.	14000 lb.	54000 lb.	74000 lb.	46900 lb.	7100 lb.
4595	605	4.3	150	292+TAG	20000 lb.	20000 lb.	14000 lb.	54000 lb.	74000 lb.	47000 lb.	7000 lb.
SPARTAN®											
FLOOR PLAN	ENGINE HP	AXLE RATIO	FUEL CAP.	WHEEL BASE	FRONT GAWR	REAR GAWR	TAG GAWR	GVWR	GCWR	APP. UVW	APP. NCC
4521	605	4.3	150	292+TAG	20000 lb.	20000 lb.	14000 lb.	54000 lb.	74000 lb.	47200 lb.	6800 lb.
4551	605	4.3	150	292+TAG	20000 lb.	20000 lb.	14000 lb.	54000 lb.	74000 lb.	47200 lb.	6800 lb.
4569	605	4.3	150	292+TAG	20000 lb.	20000 lb.	14000 lb.	54000 lb.	74000 lb.	46700 lb.	7300 lb.
4595	605	4.3	150	292+TAG	20000 lb.	20000 lb.	14000 lb.	54000 lb.	74000 lb.	47300 lb.	6700 lb.

The content in our literature depicts and describes products that are subject to change. For the most recent images and information, please visit [NewmarCorp.com](http://NewmarCorp.com).

Lengths, heights, widths, and dry weights are approximate. Weight will vary based on optional equipment added to the above base weight.

**GAWR:** Gross Axle Weight Rating is the maximum permissible weight for an axle.

**GVWR:** Gross Vehicle Weight Rating is the maximum permissible weight for a fully loaded motor coach.

**GCWR:** Gross Combination Weight Rating is the value specified by the manufacturer of the vehicle as the maximum allowable loaded weight of this motor coach and any towed trailer or towed vehicle.

**UVW:** Unloaded Vehicle Weight is the weight of this motor coach as built at the factory with full fuel, engine oil, and coolants. Does not include cargo, fresh water, propane gas, or dealer-installed accessories.

**NCC:** Net Carrying Capacity is the maximum weight of all occupants, including the driver, personal belongings, food, fresh water, waste water, propane gas, tools, tongue weight of towed vehicle, dealer-installed accessories, etc., that can be carried by the motor coach.

**Specifications supplied by the chassis manufacturer.**

**Essex R-Values:**

- Roof R-Value = 19
- Sidewall R-Value = 11
- Floor R-Value = 16
- Basement R-Value = 4



# FEATURES

---

AND OPTIONS

## EXTERIOR FEATURES

Full-Paint Masterpiece Finish™ with Cut & Buff and Beta Fusion Protection on Front Cap  
Convex Exterior Chrome Mirrors with Remote Control, Defrost, Turn Signals and Side-View Cameras

Baggage Door Push Button, Keyless Entrance Door with Touchpad and Doorbell

Entrance Door with Automatic Step

Rear Hitch for Towing Car

Assist Handle at Entrance Door

Dual Latched Front Entrance Door with Power Flush Stepwell Cover

Mud Flaps

Rear Protective Tow Guard with Stainless Steel Newmar Name Cutout

Undercoating

Hydraulic Leveling Jacks

Stainless Steel Exterior Trim Pieces and Entrance Door Kick Panel

Storage Bins in Pegboard Compartment

Holding Tank Levels Displayed in Exterior Water Works Compartment

### OPTIONS

Stainless Steel Trim Kit for Onyx Package

Stainless Steel Trim Kit for Exterior Compartment Doors

Flagpole Bracket

Storage Tray 26" x 90" Power with Shelf in Top of Compartment, Location-Bay 2

Storage Tray 26" x 91" Non-Power with Shelf in Top of Compartment, Location-Bay 2

Storage Tray 34" x 56" Non-Power, Location-Bay 4

Storage Tray 39" x 56" Non-Power, Location-Bay 4

Storage Tray 40" x 90" Power with Shelf in Top of Compartment, Location-Bay 3

Storage Tray 42" x 91" Non-Power with Shelf in Top of Compartment, Location-Bay 3

## CONSTRUCTION FEATURES

Fiberglass Roof and Integrated Gutter Rail

Gelcoated Fiberglass Exterior Sidewalls, Front and Rear Caps

Aluminum-Frame Sidewalls and Roof Construction, 16" on Center

5/8" Foam Insulation Laminated in Sidewalls and Ceiling

Polar Pak R19 Batten Insulation on Roof

Automatic Mechanical Lock Arms on Non-Hydraulic Slideout Rooms-Paddle Style

Egress Door with Ladder System

## WINDOWS, AWNINGS, & VENTS

Frameless Double-Pane Tinted Safety-Glass Windows

Fan-Tastic® Vent with Rain Sensor with Hardwood Louvered Cover in Kitchen, Bathroom and Enclosed Stool Room

Girard® Two Nova Side Awnings with Window Sensor, Remote Control and LED Lights

Girard® Slideout Covers, Entrance Door and Power Window Awnings\*

Large Non-Ventilated Living Room and Dinette Windows

One-Piece Tinted Windshield

Driver Side Power Window

### OPTIONS

Kitchen Window

## CHASSIS FEATURES

Freightliner® Tag Axle, 605 HP

Air Leveling Control System

Alcoa Dura-Bright Aluminum Wheels

Automatic High Beam Headlights

Electronic Chassis Information Center in Dash

Electronic Stability Control

Cummins Connected Diagnostic System

Cruise Control

Comfort Drive™ Steering with Power Column and Adjustable Control

Recessed Fuel Fills with Crossover to Fill from Either Side

Back-Up Alarm

Blind Spot Detection

Anti-Lock Braking System

Chassis Battery Disconnect

Automatic Headlights On/Off

Push Button Engine Start

Glass Dash Instrument Panel

Tire Pressure Displayed on Glass Dash

Mobileye® Lane Tracking and Lane Departure Warning System

Power Tilt and Telescope VIP Smart Steering Wheel

Steering Wheel Nine Function Switch Pod in Center on Spartan® Chassis

Tank Dump Side Tilt Mode

Trailer Tow Mode

Valid Digital Glare Free Dash

Valor Generation 3 TPMS System

### OPTIONS

Freightliner® Chassis Onyx Package

Spartan® K3, Tag Axle, 605 HP

Spartan® Chassis Onyx Package

Memory Settings for Driver Seat Pedals, Steering Column and Mirrors on Spartan® Chassis

OnGuard™ Collision Mitigation Adaptive Cruise System with Adjustable Following Distance Control on Spartan® Chassis
Mobileye® Displayed on Digital Dash via Xite Radio Interface on Spartan® Chassis
Steering Wheel Nine Function Switch Pod in Center on Spartan® Chassis
Curt Spectrum Integrated Brake Control on Spartan® Chassis Only

### AIR CONDITIONING & HEATING

Three 15K BTU Penguin™ Heat Pump Central Air Conditioners with Remote Control Thermostat
Chinook Dual Loop Heat with Continuous Hot Water
Dash Heater and Air Conditioner
Driver and Passenger Dash Overhead Ventilation System
Roof Air Conditioning Drainage System
Electric Radiant Heat Installed Below Main Floor Tile

### ELECTRICAL FEATURES

12.5 kW Cummins Onan® Diesel Generator with Auto Changeover on Hydraulic Slideout Tray
10w Solar Panel to Charge Chassis Battery
50 Amp Electrical Service with Flexible Cord with Automatic Transfer Switch
Battery Disconnect Switch for House Battery
Lithium Ion 640 AHR Battery System with Two 3000w True Sine Inverters
12 Volt Auxiliary Receptacle on Dashboard
Emergency Engine Start Switch
Engine Block Heater
Exterior Security Lights
Midship Side Turn Signals
LED Lights Recessed in Ceiling and Underneath Overhead Cabinets
LED Lights in Pull-Out Pantry, Kitchen and Bathroom Base Cabinets
Accent Lights in Feature Ceiling, Lambrequins, Kitchen, Bed Base, Fascia Trim and Under Dash
Reading Lights at Head of Bed-Dimmable with Adjustable Aim
Lighted Vanity Mirrors
Manually Operated Hold-To-Run Slideout Switch
Automatic Generator Start on Low Battery or Temperature Setting
Cable TV Connection
Interior Courtesy Lights
USB Outlet for Driver Use
110 Volt Recept in Bed Overhead with Two Pass-Through Ports
110 Volt/USB at Head of Each Bunk Bed Area*
KIB Touchscreen Interior Light and Shade Controls

Power Rewind Wheel with 50' Cord*
Secondary Multiple Touchscreen in Bedroom
Silverleaf® Multiplex Electrical Wiring System
Solar Prep with Six Gauge Wire from Roof to House Battery Compartment
Spare Fuses in Chassis and House Fuse Panels
LED Lights in Exterior Storage Compartments on Automatic Switches
LED Lights Installed Below Under Door Side Slideouts
Exterior LED Accent Lights Above Rear Tow Guard
LED Docking Lights with Stainless Steel Trim
Rear Hitch Docking Light
High Power USB Charger at Dinette and Bedroom Nightstand
Wireless Charging Mat Built into Dash and Nightstand Tops
Wireless Charging Mat Built into Passenger Console
USB Outlet High Power at Dinette and Bedroom Nightstand
Transfer Switch with Surge Protector
Dash Radio, Cameras and Monitors to Power-up from Both House Batteries and Ignition

<b>OPTIONS</b>
Four Flexible 110w Solar Panels on Roof
30 Amp/120 Volt Cord Connection for Stacker Trailer
LED Strip Lighting Installed Under Off Door Side Slideouts
Roof Mounted Spotlight
Third Lithium Ion 320 AHR Battery

### PLUMBING & BATH FEATURES

Demand Water System
Sewage and Grey Holding-Tank Rinse
Dometic® Concerto Electric Flush or Macerator China Bowl Stool*
Full Tiled Shower Walls and Floor
Fold-Down Shower Seat*
Assist Handle in Each Shower
Water Filter for Entire Unit
Exterior Convenience Station with Hot/Cold Water, Soap and Towel Dispenser
Auto Fill for Fresh Water Tank
Bladder Tank for Water Pump System
Power Water Hose Reel
Aqua Miser® Shower System
Hot Water Line to Generator Area*
ManaBloc Plumbing System
Dump Valves Power for Holding Tanks

<b>OPTIONS</b>
RV Sanicon Turbo System



## INTERIOR FEATURES

Designer Feature Ceiling and Cathedral Ceiling with Added Height on Rear Bath Floor Plans\*

Tile Floor in Kitchen, Bathroom, Bedroom and Living Area

Auto Motion Power Shades and Lambrequins

Auto Motion Power Shades for Windshield and Driver/Passenger Side Windows

Trim Ring Hardwood Around Windows

Hardwood Raised Panel Interior Passage Doors

Flush Handles on Swinging Bath Doors

Maximized Shoe Storage Shelves Recessed into Rear of Wardrobe\*

Shoe Storage Pull-Out in Rear Wardrobe\*

Interior Assist Handle at Main Entry Door

Fitted Non-Quilted Bedspread with Accent Pillows

Safe Located in Bedroom Wardrobe

Wastebasket in Kitchen Base Under Sink

## CABINETS & FURNITURE

Sable Maple Hardwood Cabinets—Suede Finish

Concealed Hinges on Cabinet Doors

Super Polished Solid-Surface Countertop in Kitchen with Undermounted Stainless Steel Sink and Sink Covers

Super Polished Solid-Surface Countertop in Bathroom and Bedroom

Lifts on Bed Top

Pull-Out Pantry Shelves\*

Pantry Electric Door Travel Lock System

Pantry with Space for Serving Trays/Bakeware

Drawers with Dove Tail Sides with Self-Closing Full Extension Ball Bearing Guides

Soft-Close Cabinet Doors\*

Cabinet Construction Unitized with Full Overlay Doors

Leather Sofa and Front Seats with Integrated Seatbelts

Heated Front Seats with Power-Lumbar, Recline, Footrest and Queen-Size Passenger Seat

Driver and Passenger Cooled Air Seats

Cedar Paneling in Bedroom Wardrobe\*

Extended Rotation Concealed Hinge for Washer and Dryer Cabinet Door

Side Folding Hide-A-Bed Sofa with Memory Foam Mattress\*

R5 Radius Corner Air Mattress

Full Height Wardrobes Beside Lav\*

Molded Silverware Divider Tray

Dinette Euro Booth with Two Table leaves and Two Folding Chairs\*

Cell Phone Mesh Holder at Each Bunk Bed\*

## OPTIONS

Morel Maple Contemporary Hardwood Cabinets—High Gloss or Suede Finish

Sable Maple Contemporary Hardwood Cabinets—High Gloss Finish

Sedona Maple Contemporary Hardwood Cabinets—High Gloss or Suede Finish

Summit Maple Contemporary Hardwood Cabinets—High Gloss or Suede Finish

Two-Tone Summit Maple and Morel Maple Contemporary Hardwood Cabinets—High Gloss or Suede Finish

Two-Tone Summit Maple and Sable Maple Contemporary Hardwood Cabinets—High Gloss or Suede Finish

Two-Tone Summit Maple and Sedona Maple Contemporary Hardwood Cabinets—High Gloss or Suede Finish

Morel Glazed Maple Traditional Hardwood Cabinets—High Gloss or Suede Finish

Sable Maple Traditional Hardwood Cabinets—High Gloss Finish

Sedona Glazed Maple Traditional Hardwood Cabinets—High Gloss or Suede Finish

Summit Glazed Maple Traditional Hardwood Cabinets—High Gloss or Suede Finish

Two-Tone Summit Glazed Maple and Morel Glazed Maple Traditional Hardwood Cabinets—High Gloss or Suede Finish

Two-Tone Summit Glazed Maple and Sable Maple Traditional Hardwood Cabinets—High Gloss or Suede Finish

Two-Tone Summit Glazed Maple and Sedona Glazed Maple Traditional Hardwood Cabinets—High Gloss or Suede Finish

Power Extenda Flex Dinette

U-Dinette with Power Adjustable Table

Euro Booth Dinette with Two Table Leaves and Two Folding Chairs

Combination Desk with Buffet Table, Two Fixed and Two Folding Chairs

Convertible Dinette with Two Fixed and Two Folding Chairs that Face to Window

Two Recliners with Lampstand and Reading Lights

Driver Seat with Massage Feature

Passenger Seat Queen-Size

Passenger Seat Queen-Size with Massage Feature

Passenger Seat Standard Width with Massage Feature

Overhead Cabinet Above Dinette

Overhead Cabinet in Dinette/Living Room Slideout

84" Powered Theater Seating

87" Powered Theater Seating

One Ottoman\*

## APPLIANCES & ACCESSORIES

Air Horns

21.6 Cu. Ft. Bosch® Stainless Steel Refrigerator

30" Bosch® Stainless Steel Convection Microwave

Splendide® Two-Piece Stacked Washer and Dryer
3.0 Cu. Ft. Dometic® Freezer on Pull-Out Tray in Exterior Baggage Compartment*
Storage Shelf Above Freezer
Central Vacuum with Tool Kit
Bosch® All Electric, Flush Mount Induction Cooktop with Three Burners
<b>OPTIONS</b>
Dishwasher in Drawer with Wood Panel Front
Beverage Center Dual Zone

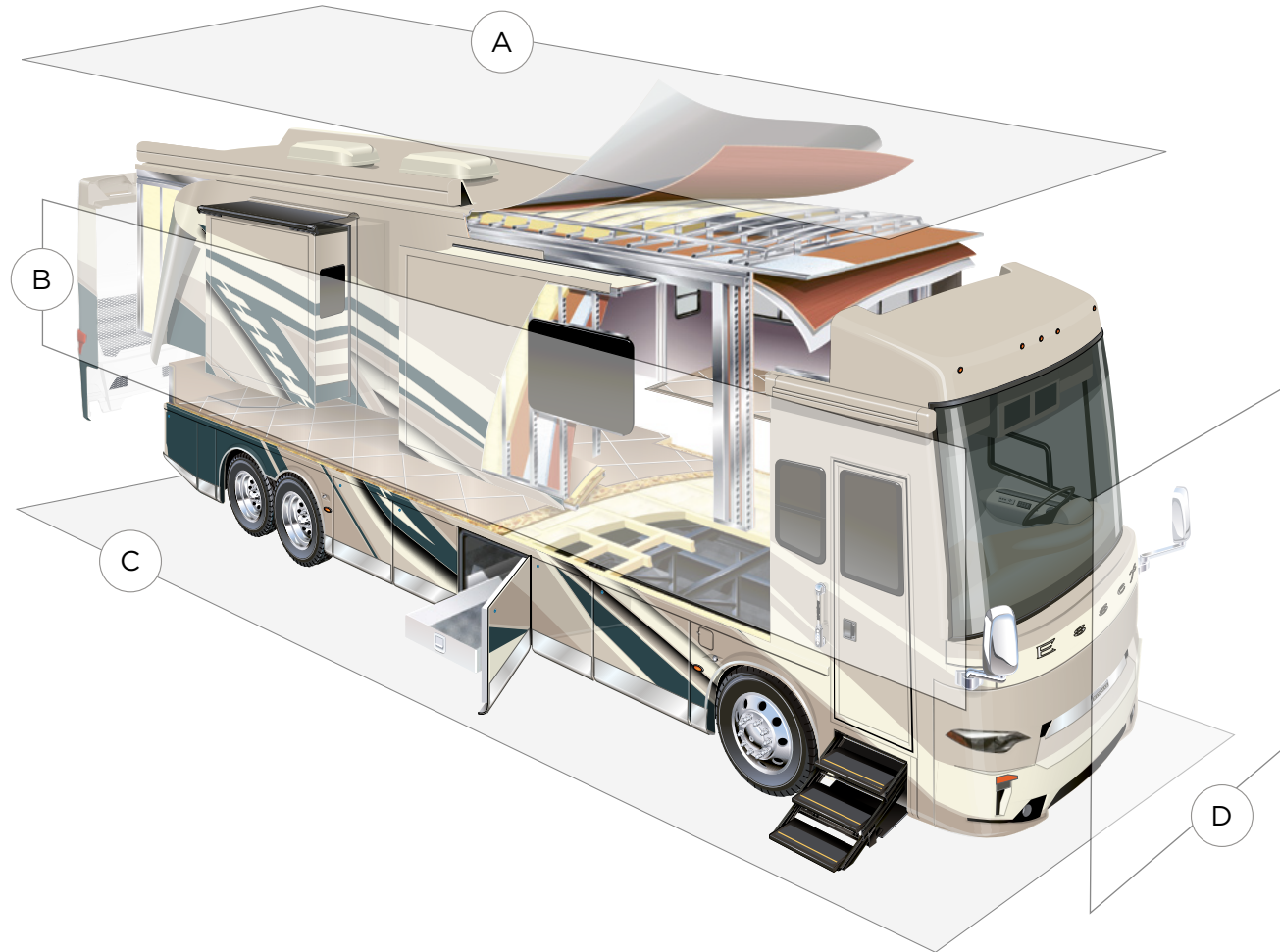
**AUDIO, VIDEO & ACCESSORIES**

Samsung® LED TV in Living and Bedroom Areas* (TV Sizes Vary Per Floor Plan)
50" Samsung® 4K LED TV on Televator in Living Area*
43" Samsung® 4K LED TV in Front Overhead
Bose® 500 Subwoofer
Bose® 900 Sound Touch Soundbar in Living Room
Bose® Bedroom Speaker
Dash Radio with Touchscreen Navigation, Dual Monitors, Harman/JBL 360w Sound System and Subwoofer
Internet Connectivity for Remote Access to Motorhome
Samsung® Tablet with Control of AV Equipment, Lights, Shades, Keyless Entry and Silverleaf® App
Winegard Rayzar Automatic Digital TV Antenna
Satellite Dish Prep on Roof
Radio SiriusXM® Capability with Antenna (Does Not Include Monthly Subscription)
TV Jack and 110 Volt Recept in Door Side Exterior Storage Compartment
Cat 6 TV Cables
Infrared Repeater System to Operate Audio/Visual Components
WiFiRanger Denali/Spruce LTE
Xite HD 360 Camera System with Predictive Grid Lines and Tri-View Rear Camera
Xite Dash Radio with Apple CarPlay®, 10" Dual Monitor with Nav-N-Go Navigation System
10 Bc Fire Extinguisher, Smoke Detector, Propane and Carbon Monoxide Detector

<b>OPTIONS</b>
Exterior Entertainment Center in Sidewall with 43" Samsung® 4K LED TV and Bose® Soundbar
Exterior Entertainment Center in Storage Compartment with 43" Samsung® 4K LED TV and Bose® Soundbar
Extra Monitor on Passenger Side
Security System
Universal Toll Module
Starlink Internet System

Rear Camera (2) Prep for Use with Stacker Trailer
WiFi System Everest with Aspen Interior Router
Winegard Automatic Open Face Satellite Dish-For DISH HD and Bell HD TV
Winegard Automatic Open Face SWM Satellite Dish-for DIRECTV Std/HD and In-Motion DIRECTV Std, DISH Std/HD
Winegard Automatic Open Face Satellite Dish and Winegard In-Motion for DISH Network
Winegard Automatic Open Face Satellite Dish for DIRECTV
Winegard In-Motion Dome Satellite Dish-for DISH Std/HD, DIRECTV Std and Bell Canada

\*Check with dealership on floor plan availability



## A. ROOF

Fiberglass Roof  
 Batten Insulation  
 A/C Ducting  
 16" on Center Aluminum Rafter Framing  
 Kraft Paper Vapor Barrier  
 5/8" Bead Foam  
 3/16" Panel  
 Padded Vinyl Overlay

## B. SIDEWALL

Interior Wall Panel  
 5/8" Bead Foam  
 Kraft Paper Vapor Barrier  
 Batten Insulation  
 Composite One-Piece  
 Gelcoat Exterior Sidewall  
 Aluminum Framing

## C. FLOOR

Carpet/Tile  
 Carpet Padding  
 5/8" Floor Decking  
 Batten Insulation  
 16" on Center Wood Framing  
 Polyethylene Moisture Barrier

## D. EXTERIOR

Three 15K BTU Penguin™ Heat Pump  
 Air Conditioners  
 One-Piece Bonded Windshield  
 Coated Aluminum Wheels  
 Bonded Windows  
 Side-Hinged Baggage Doors with  
 Optional Pull-Out Tray  
 Batten Insulation in Front and Rear Cap

# THE NEWMAR CUSTOMER EXPERIENCE

The Newmar Difference™ goes beyond our industry-leading motor coaches to provide you with an unrivaled ownership experience.



## Quality from the Start

Every Newmar is crafted one at a time by folks who have spent an average of eight years building them. And each coach we assemble must undergo more than 1,000 tests and checks before ever leaving our factory.



## Carefully Selected Dealers

We view our dealership network in terms of quality, not quantity. Each of our dealers acts as a partner in our shared mission to exceed your highest of expectations, for an ownership experience that's second to none from day one.



## Everything in One Place

As a Newmar owner, you'll find resources specific to your coach through Newgle, an easy-to-use knowledge base that houses everything from user guides to technical support documents.



## Friends for Life

Meet fellow owners through the Newmar Kountry Klub, a top social club for RV travelers that hosts rallies and other special events throughout the U.S. and Canada.



## Seamless Service

When you join the Newmar family, we pair you with a dedicated service specialist with expert knowledge of your exact coach. Our service specialists guarantee dealer warranty authorizations within four business hours and ship all in-stock parts the same day, free of charge.



## Rock-Solid Protection

All models include a one-year/unlimited mileage limited warranty and a five-year, non-transferable structural warranty that covers your coach's superstructure in the event it fails to perform. Ask your Newmar dealer for more details.

# OUR PARTNERS

The Newmar Difference™ begins with suppliers dedicated to providing our customers with unrivaled quality, comfort, and support.



We create chemistry

## BASF

The Coatings division of BASF is a global expert in the development and production of innovative and sustainable OEM and refinish coatings. Coatings by BASF—solutions beyond your imagination.



## Industrial Finishes

Industrial Finishes has supported RV manufacturers for over four decades, offering paint products that deliver uncompromising quality and provide your coach with a true Masterpiece™ finish.



Driven By You

## Freightliner Custom Chassis

Freightliner Custom Chassis are renowned for their exceptional ride, excellent maneuverability, advanced technology, and nationwide 24/7 factory-direct support.



## RiverPark

From Samsung® 4K TVs and Xite Infotainment systems to Bose® soundbars and JBL and Infinity premium audio systems, RiverPark helps you experience a higher level of technology in your Newmar coach.



## Spartan RV Chassis

An American company with over 30 years of experience in designing and manufacturing the premier motorhome chassis, Spartan delivers superior performance, exceptional safety ratings, and industry-leading technology.



WHEN YOU KNOW THE DIFFERENCE<sup>SM</sup>